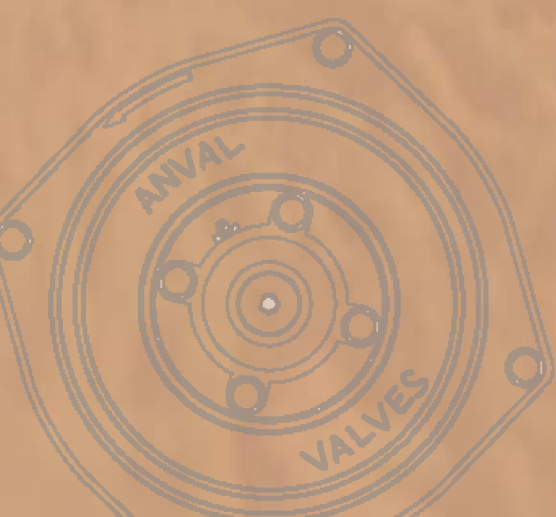
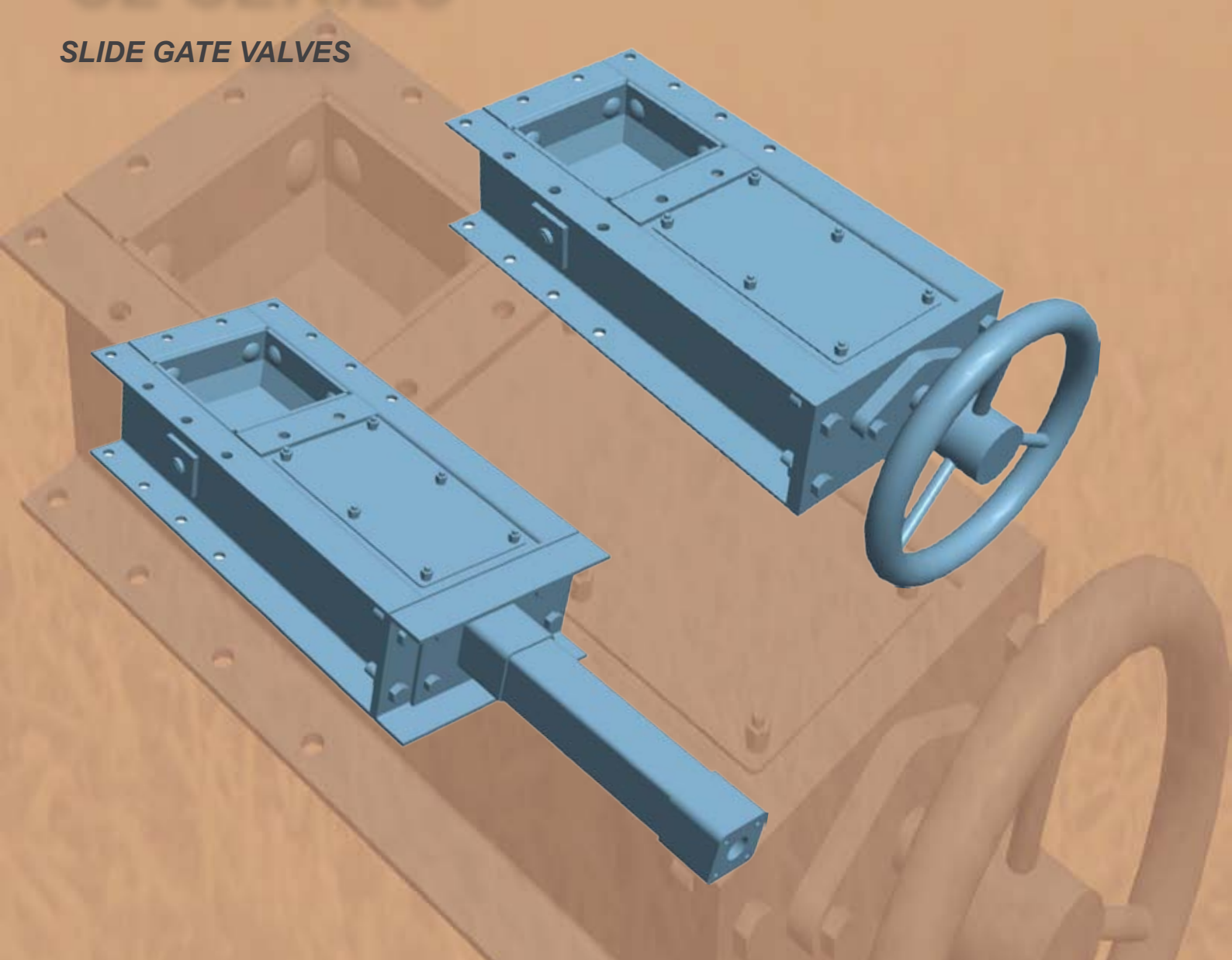


SL SERIES

SLIDE GATE VALVES



OPENING SIZE / MODEL
150/200/250/300

ACTUATION
PNEUMATIC * : P
MANUAL : M

SL

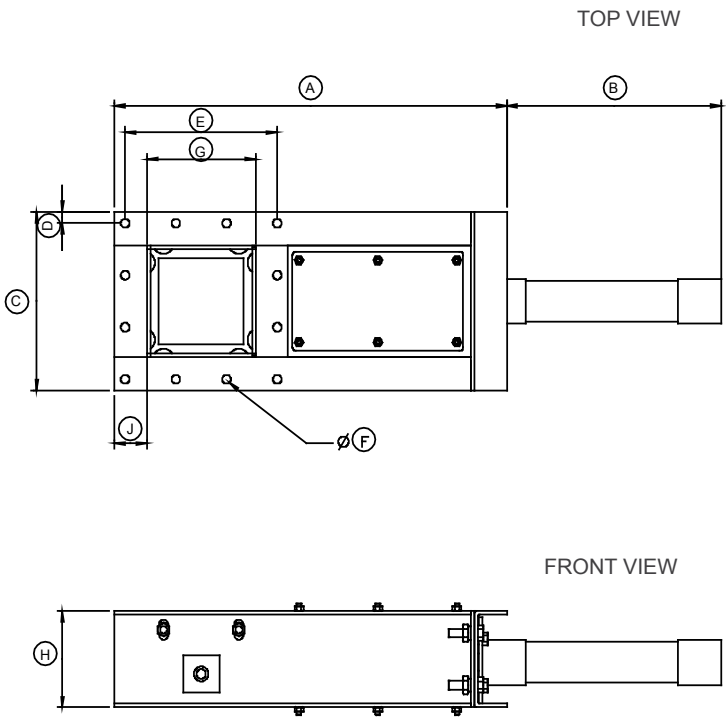
300

P

*DEFAULT

PNEUMATIC SLIDE GATE DIMENSIONS

SL

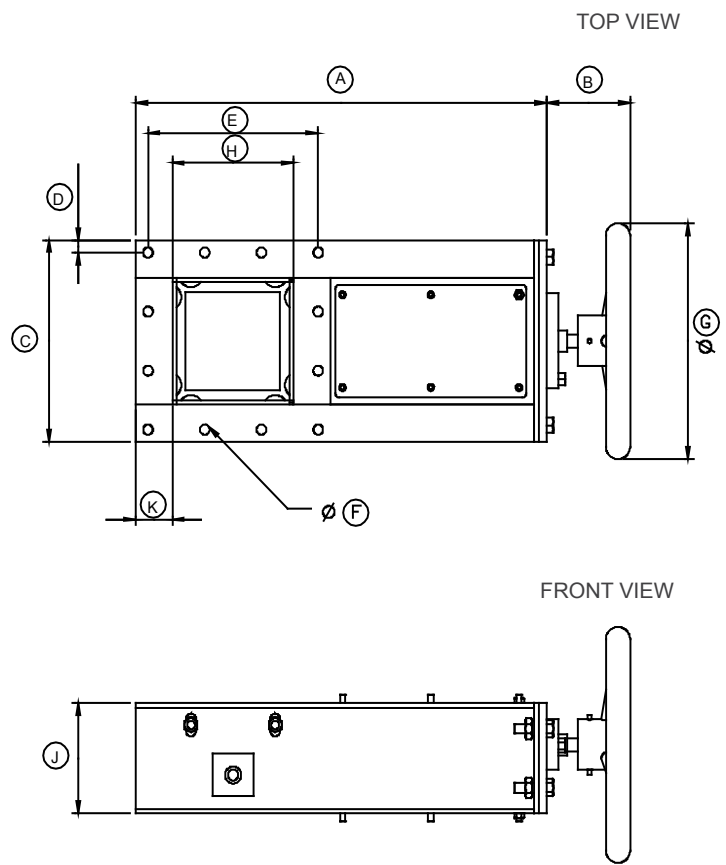


NAME	SL 150	SL 200	SL 250	SL 300
A	542	640	760	880
B	238	288	328	368
C	240	290	360	430
D	15	17.5	22.5	27
E	3 SPACES @70=210	3 SPACES @85=255	3 SPACES @105=315	4 SPACES @94=376
F	Ø 12	Ø 14	Ø 14	Ø 15
G	150	200	250	300
H	130	130	130	130
J	45	45	55	65
NET WEIGHT IN KGS	25	33	44	51
GROSS WEIGHT IN KGS	29	38	50	58

ALL DIMENSIONS IN MM.

MANUAL SLIDE GATE DIMENSIONS

SL



NAME	SL 150	SL 200	SL 250	SL 300
A	507	605	715	825
B	101	100	100	101
C	240	290	360	430
D	15	17.5	22.5	27
E	3 SPACES @70=210	3 SPACES @85=255	3 SPACES @105=315	4 SPACES @94=376
F	Ø 12	Ø 14	Ø 14	Ø 15
G	Ø 280	Ø 280	Ø 280	Ø 280
H	150	200	250	300
J	130	130	130	130
K	45	45	55	65
NET WEIGHT IN KGS	22	30	40	48
GROSS WEIGHT IN KGS	26	35	46	55

ALL DIMENSIONS IN MM.

BLADE

STANDARD BLADE MATERIAL : Mild Steel

SL

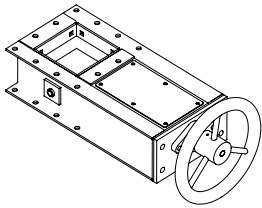
BLADE THICKNESS : 10mm

OPTIONS AVAILABLE

BLADE MATERIAL : Stainless Steel

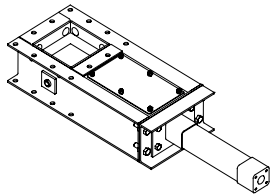
ACTUATORS

SL



HAND WHEEL

- HAND WHEEL / MANUAL : Spindle and Socket arrangement



PNEUMATIC

- PNEUMATIC : Single cylinder double acting piston

SL VALVE BODY

SL

STANDARD MATERIAL CONSTRUCTION : Mild Steel

FLANGE THICKNESS : 5mm

OPTIONS AVAILABLE

BODY MATERIAL : Stainless Steel

SIZE RANGE AND APPLICATION

SL

OPENING SIZE RANGE : 150 mm to 300 mm

APPLICATION

- Silos and hoppers for all bulk material isolation applications.



PNEUMATIC

- **ECONOMICAL & RELIABLE SOLUTION FOR BULK MATERIAL ISOLATION.**
- **COMPACT SIMPLE AND ROBUST DESIGN.**
- **FABRICATED CONSTRUCTION AVAILABLE IN MS & SS MATERIALS.**
- **MANUAL, AND PNEUMATIC ACTUATION.**
- **MINIMAL LEAKAGE AND FREE FLOW OF MATERIALS WITHOUT CLOGGING**

- **EASY TO INSTALL AND MAINTAIN. HEAVY DUTY ISOLATION.**
- **DESIGNED AND MANUFACTURED TO MEET INTERNATIONAL STANDARDS**
- **CUSTOM VALVES MANUFACTURED TO SUIT SPECIFIC REQUIREMENTS.**



HAND WHEEL / MANUAL

OUR LOCATIONS

Rev : Mar 2016 - 3

AUSTRALIA

+61 8 9726 0988

INDIA

+91 44 47400 505 / 432

UNITED KINGDOM

+44 (0) 207 117 2067

SINGAPORE

+61 8 9726 0988

www.anval.net | info@anval.net